



Upgrading

your slit lamp

Images and videos in 2D or 3D



Check & review

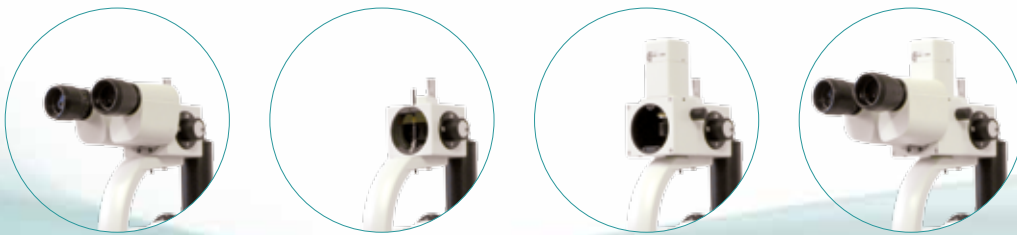
is a package consisting of a digital camera and capture software for high resolution images and videos in 2D or 3D for your approved slit lamp.

Why check & review?

✓ Simple mounting and installation

Check & review camera system offers an optimal upgrade for your slit lamp, because it fits almost invisibly into the appearance of your slit lamp.

Mounting of check & review using the example of SL115:
Remove the ocular, mount the camera system, replace the optics and start to work.



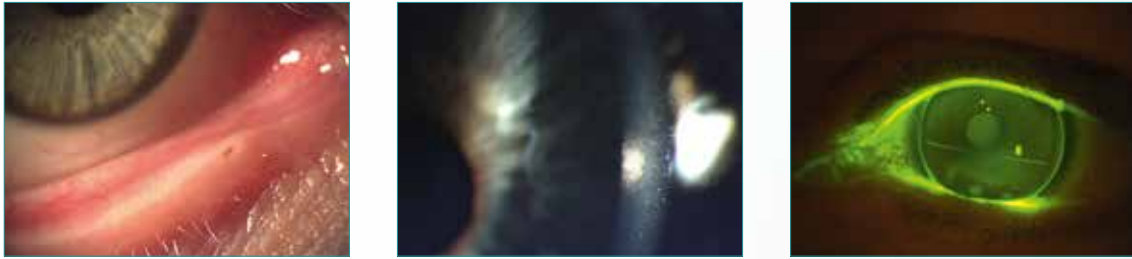
During the menu driven software installation the camera system will be adjusted to your working area. The default set of parameters facilitate switching between e.g. „slit“, „full eye“ and „fluorescence“.

✓ Preset and individual parameters

For every recording situation parameters can be preset while installing. They are quickly available during examination.

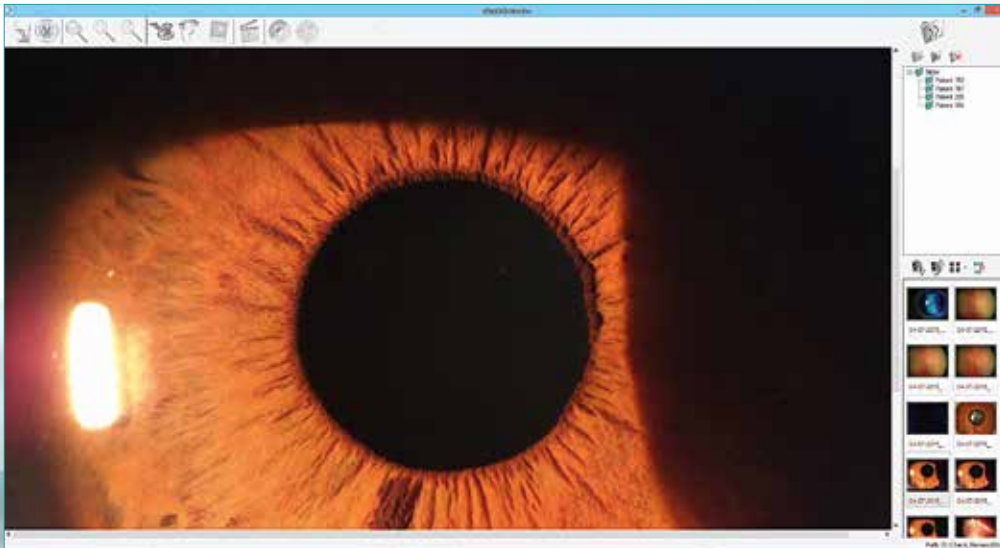
So daily routines are perfectly adjusted.





✓ Only two clicks

You activate the shutter via footswitch gaining your findings within two clicks.



✓ Excellent images and videos

The fully usable iris shutter achieves a maximum depth of field.

✓ Filing of images and videos

You can use your approved patient management system or Windows Explorer for archiving.



Zeiss SL 115

USB 2.0	✓	<ul style="list-style-type: none"> • Camera is bound upward, short lens tube • Including capture software, including footswitch
USB 3.0	-	
3D	-	
Yellow filter	-	



Zeiss SL 120, SL 160

USB 2.0	✓	<ul style="list-style-type: none"> • Camera is bound upward, short lens tube • Including capture software, including footswitch
USB 3.0	✓	
3D	-	
Yellow filter	✓	



Zeiss SL 130

USB 2.0	✓	<ul style="list-style-type: none"> • Including capture software, including footswitch
USB 3.0	✓	
3D	✓	
Yellow filter	✓	



Zeiss SL 220

USB 2.0	✓	<ul style="list-style-type: none"> • Including capture software, including footswitch
USB 3.0	✓	
3D	✓	
Yellow filter	-	



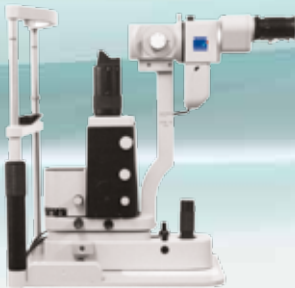
Zeiss Operating microscope

USB 2.0	✓	<ul style="list-style-type: none"> • Network camera with HUB power to ethernet • Including capture software, including footswitch
USB 3.0	✓	
3D	✓	
Network	✓	



Zeiss 20 SL

USB 2.0	✓	<ul style="list-style-type: none"> • Camera is bound upward, short lens tube • Including capture software, including footswitch
USB 3.0	✓	
3D	-	
Yellow filter	✓	



Zeiss 30 SL-M

USB 2.0	✓	<ul style="list-style-type: none"> • Including capture software, including footswitch
USB 3.0	✓	
3D	✓	
Yellow filter	✓	



Zeiss SL 100-16, SL 125-16

USB 2.0	✓	<ul style="list-style-type: none"> • The camera is mounted to existing beam splitter • Including capture software, including footswitch
USB 3.0	✓	
3D	-	
Yellow filter	✓	



Huvitz HS-7000, HS-7500

USB 2.0	✓	• Including capture software, including footswitch
USB 3.0	✓	
3D	✓	
Yellow filter	✓	



Haag Streit BQ 900

USB 2.0	✓	• Including capture software, including footswitch
USB 3.0	✓	
3D	✓	
Yellow filter	✓	



Topcon SL-D2, SL-D4Z, SL-D5, SL-7F, SL-2E

USB 2.0	✓	• Including capture software, including footswitch
USB 3.0	✓	
3D	-	
Yellow filter	✓	



Topcon SL-D4, SL-D7, SL-D701

USB 2.0	✓	• Including capture software, including footswitch
USB 3.0	✓	
3D	✓	
Yellow filter	✓	



BON SL-75, SL-85 (Z.), SL-75 Elite

USB 2.0	✓	• Including capture software, including footswitch
USB 3.0	✓	
3D	✓	
Yellow filter	✓	



CSO SL-980 (Z), SL-990

USB 2.0	✓	• Including capture software, including footswitch
USB 3.0	✓	
3D	✓	
Yellow filter	✓	



Rodenstock RO 3000, RO 4000, RO 5000

USB 2.0	✓	• Including capture software, including footswitch
USB 3.0	✓	
3D	-	
Yellow filter	-	



Nidek SL1600, SL1800;
ARC PCL5-Z, PCL5-SHD;
Takagi SM70, SM90; SM2, SM4
Argus SL5000;
Inami L-0179, L-0219, L-0189;
Deutsche Augenoptik AG Biomikroskop 500

USB 2.0	✓	• Including capture software, including footswitch
USB 3.0	✓	
3D	-	
Yellow filter	✓	

Digital slit lamp imaging

Sensors	USB 2.0 - 2D - HD	USB 3.0 - 2D/3D - Full HD
Connection / port	USB 2.0	USB 3.0
Resolution	1,31 Mpix 1280x1024	5,04 Mpix 2456x2054 (1920x1080 3D)
Sensor format	4:3	
Pixel size	5,3 µm	3,45 µm
Frame frequency	25 fps	36 fps
Image format	jpg	
Video format	avi	
Sensortype	CMOS	
Sensor size	1/1,8"	2/3"
Shutter	Global/Rolling	Global

System requirements PC or laptop

	Minimal	Recommended
Clock speed (CPU)	2 x 2,4 GHz (z.B. Core i3-4330TE)	4 x 3,0 GHz (z.B. Core i5-2320)
MAin memory (RAM)	4 GB	8 GB
USB Hostcontroller	USB 3.0 bis 600 MByte/s	
Graphics	AGP-/PCIe-graphic board, current version of Microsoft DirectX Runtime 9.0c	
Working systems	Windows (10, 8.1, 7) 32- oder 64-Bit	
Display	PC monitor matt display, non-reflecting	PC monitor matt display, non-reflecting 3D monitor z.B. LG, 3D-Polaskop side by side, 3D-interlaced mode

Product recommendations

2D PC monitor	BenQ GL2450 EIZO EV2450 EIZO FlexScan EV2455
3D TV passive	LG 49UF8519 LG50LF6529 Panasonic 4K VIERA 49CXW754 Panasonic TX-43CXW754 LED TV Philips 47PFK7509

Distribution



Wagner & Guder Medical GmbH
Dorfstraße 57
D-99510 Hermstedt

Telefon: +49 (0) 36 44 / 51 55 61
Telefax: +49 (0) 36 44 / 51 55 63
Email: info@wagner-guder-medical.de

Homepage: www.wagner-guder-medical.de
Shop: www.praxis-optikerbedarf.de
Product's website: www.check-review.de

Subject to changes in design and/ or equipping.